

## CASE STUDY

# BASEMENT WATERPROOFING

## Basement Waterproofing, Tunbridge Wells

BASEMENT WATERPROOFING, GEORGIAN MANOR HOUSE, TUNBRIDGE WELLS, KENT

Newton Waterproofing System Fulfils All Listed Buildings Requirements

### History

This Georgian property is situated in one of most sought after locations of Royal Tunbridge Wells. The client converted this extensive 15 room basement into a luxury stand alone property; converting the space from a damp storage area into a Grade III habitable apartment. The main contractors Brambilla Ltd were awarded the contract and contacted Newton Specialist Basement Contractor, Advanced Preservations to carry out the design and installation of the Newton System 500.

### Methodology

Newton System 500 was installed onto all external and internal areas of the property. The Newton 508 was curtain hung to the walls with Newton Multiplug. In the confined spaces of the basement Newton 503 was installed. Once the new concrete slab has been installed and levelled, Newton Basedrain was placed on top of the slab level around the retaining walls. 50mm of closed cell insulation was installed abutting the drainage channel. From here, the Newton 508 membrane was placed on top of the insulation and sealed to the up stand of the Basedrain. Within this project, head height was a concern to the client, so a specialised pumped polymer-based screed was introduced. This product was pumped on top of the under floor heating system which was installed over the floor membrane. The client was then able to introduce a 40mm screed instead of the standard 65mm sand and cement screed finish. Two Newton Titan pumping systems are in use alongside the Basedrain with battery back-up support.

### Result

Minimal surface preparation was required and the client has a clean, effective solution that allows the contractor to fulfil Listed Buildings requirements as well as sound and insulation regulations.

### Benefits

This stunning property has a serviceable and effective water management solution. Extendible access ports were installed into the perimeter channel to give the installer the ability to service the system at a later date. The engineered screed applied saved 25mm in over head height and construction could continue 24 hours after the screed was poured.

**NSBC Contractor: Advanced Preservation**



This Georgian Manor House had a 15 room basement requiring waterproofing



Newton System 500 installation in progress



The property now has a serviceable and effective water management system



This stunning property is now free from damp

# CASE STUDY

## BASEMENT WATERPROOFING

### Basement Waterproofing, Tunbridge Wells



**NEWTON**  
WATERPROOFING SYSTEMS

*Protecting buildings since 1848*

## Featured Products

### NEWTON SYSTEM 500

Maintainable Cavity Drain System Comprising Waterproof Membranes, Drainage, and Pumps

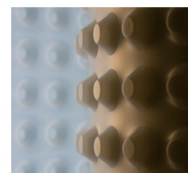
The professional's "waterproofing system of choice", Newton System 500 is an internally applied waterproofing system based upon Newton's extensive range of cavity drain membranes, drainage conduits and sophisticated pumping and control systems. It is a maintainable system, so complies with BS8102 Code of Practice for Protection of Structures Against Water from the Ground.

Newton recommends that our structural waterproofing systems are installed by one of our Nationwide Network of Newton Specialist Basement Contractors (NSBC)

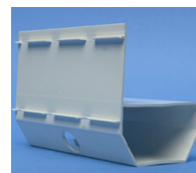
NSBCs have been trained by Newton and can offer full professional indemnity on design and insured backed guarantees on the installation.



### Newton System 500



Waterproof Membranes



Drainage



Pumping System



Water Pumps

*Cavity Drain Waterproofing*