

## CASE STUDY

# BASEMENT WATERPROOFING

Pickenham Hall, Norfolk

## BASEMENT WATERPROOFING

Newton System 500 cavity drain waterproofing installed to a new-build extension of this Grade 2 Mansion

### Project Details

**Client:** Kier Construction

**Newton Specialist Basement Contractor (NSBC):** AP Gooch Basement Waterproofing

**Project Size:** 3,000 square foot

**Products Used:** Newton System 500 Cavity Drain Waterproofing Incorporating Titan Pro Chambers and Newton Basedrain

Newton Specialist Basement Contractor AP Gooch were commissioned to design and install a waterproofing solution for a large extension to this Grade 2 Mansion in Norfolk.

### Methodology

AP Gooch installed the Newton System 500 waterproofing solution to manage and remove any ingressing water. Newton 508 8mm Cavity Drain Membrane was installed to the walls and floors of this large basement.

Newton System 500 is a fully maintainable waterproofing solution so complies with BS 8102:2009 requirements (*the British Standard Code of Practice for Protection of Below Ground Structures Against Water from the Ground*)

The floor build up was 50mm of closed cell insulation on a structural slab with Newton 508 on top of the insulation with a 65mm screed to finish. Newton Basedrain was installed around the wall/floor junction and across day work joints. Basedrain collects any ingressing water and diverts it out of the structure via Newton Sump Pumps. As such, AP Gooch incorporated two Titan-Pro Chambers into the design, including twin NP400 pumps.

### Result

The waterproofing works installed by AP Gooch created a habitable Grade 3 environment, as defined by BS 8102:2009. AP Gooch delivered the result well within tight time constraints and the client was very happy with the results.

### Testimonial

*"Kier Construction were extremely happy with our performance completing the works two weeks ahead of schedule in this 3,000 square foot basement."* - Anthony Gooch (Newton Specialist Basement Contractor)



Grade 2 Listed Pickenham Hall, Norfolk



Newton 508 installed to the new extension walls



65mm of screed applied as a finish to the floor



Newton 508 cavity drain membrane applied on top of the closed cell insulation

## Featured Products

### NEWTON SYSTEM 500

Maintainable Cavity Drain System Comprising Waterproof Membranes, Drainage, and Pumps

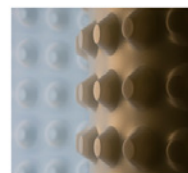
The professional's "waterproofing system of choice", Newton System 500 is an internally applied waterproofing system based upon Newton's extensive range of cavity drain membranes, drainage conduits and sophisticated pumping and control systems. It is a maintainable system, so complies with BS8102 Code of Practice for Protection of Structures Against Water from the Ground.

Newton recommends that our structural waterproofing systems are installed by one of our Nationwide Network of Newton Specialist Basement Contractors (NSBC)

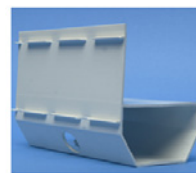
NSBCs have been trained by Newton and can offer full professional indemnity on design and insured backed guarantees on the installation.



### Newton System 500



Waterproof Membranes



Drainage



Pumping System



Water Pumps

*Cavity Drain Waterproofing*