

R-KEM II with Threaded Rods for Concrete

Universal polyester (styrene free) resin - European Approval for 15 substrates



Approvals and Reports

- ETA-12/0394
- ETA-21/0243



Product information

Features and benefits

- The most convenient bonded anchor for general purpose use
- Quick, secure and simple installation
- Product with wide spectrum of use in the medium load capacity area
- Ideal for applications where mechanical anchors are not suitable
- Easy dosage thanks to patented self-opening system and use of manual or pneumatic gun
- Option of use standard manual silicone gun
- Suitable for multiple use. Partly used product can be reused after fitting new nozzle

Applications

- Consoles
- Staircases
- Gates
- High racking
- Canopies
- Sanitary appliances
- Steel constructions
- Railings
- Handrails
- Ladders
- Cable trays

Base materials

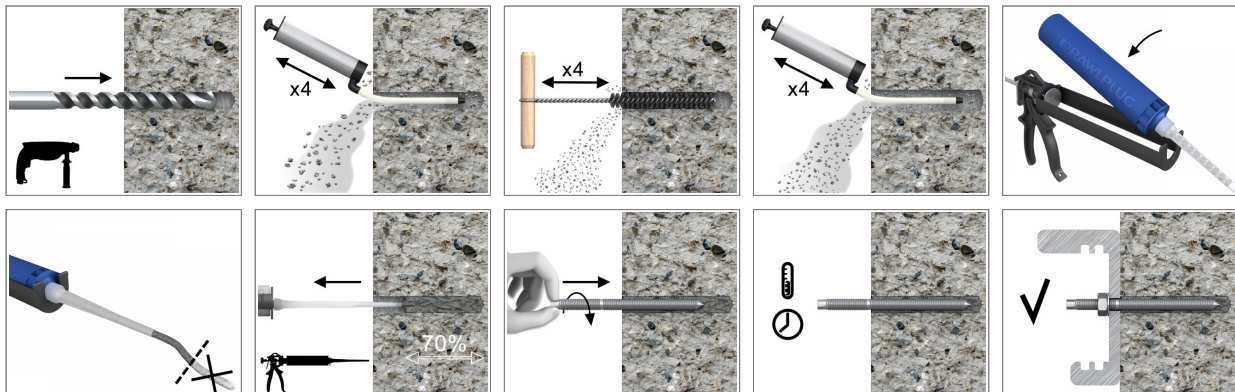
Approved for use in:

- Non-cracked concrete C20/25-C50/60

Also suitable for use in:

- Natural Stone (after site testing)

Installation guide



Product information

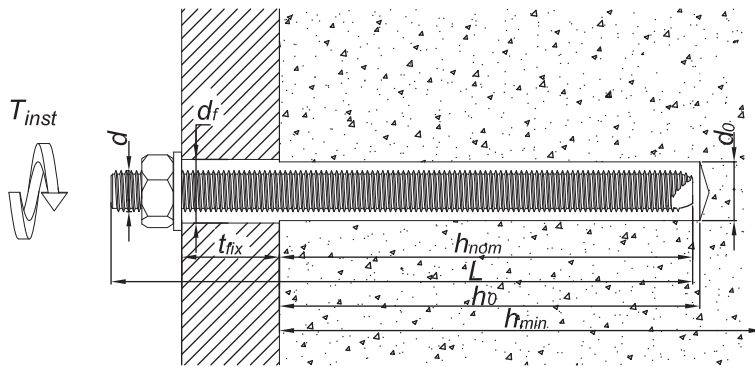
1. Drill hole to the required diameter and depth for stud size being used.
2. Solid substrates: clean the drill hole thoroughly with brush and hand pump at least four times before installation.
3. Insert cartridge into gun and attach nozzle.
4. Dispense to waste until even colour is obtained.
5. Insert the mixer nozzle to the bottom of the drill hole and inject resin, slowly withdrawing the nozzle as the hole is filled to 70% of its depth.
6. Immediately insert the stud, slowly and with slight twisting motion. Remove any excess resin around the hole before it sets and leave it undisturbed until the curing time elapses.
7. Attach fixture and tighten the nut to the required torque.

Product Code	Resin	Description / Resin Type	Volume
			[ml]
R-KEM-II-175	R-KEMII	Styrene Free Polyester Resin	175
R-KEM-II-300			300
R-KEM-II-380			380
R-KEM-II-410			410
R-KEM-II-175-W	R-KEMII-W	Low Temperature (Winter) / Rapid Cure Styrene Free Polyester Resin	175
R-KEM-II-300-W			300
R-KEM-II-175-S	R-KEMII-S	High Temperature (Summer) / Slow Cure Styrene Free Polyester Resin	175
R-KEM-II-300-S			300
R-KEM-II-175-SET	R-KEMII	Set with 4 studs and plastic sleeves	175
R-KEM-II-300-SET			300
R-KEM-II-300-STONE		Stone colour Styrene Free Polyester Resin	410
R-KEM-II-410-STONE		410	
R-KEM-II-300-GREY		Grey colour Styrene Free Polyester Resin	300
R-KEM-II-410-GREY		410	
R-KEM-II-300-SV		Styrene Free Polyester Resin	300

R-STUDS

Size	Product Code			Anchor		Fixture	
	Steel class 5.8	Steel class 8.8	Steel grade A4	Diameter	Length	Hole diameter	Max. thickness for:
				d	L	d _f	h _{nom, 12d}
				[mm]	[mm]	[mm]	[mm]
M8	R-STUDS-08110	R-STUDS-08110-88	R-STUDS-08110-A4	8	110	9	4
	R-STUDS-08160	-	R-STUDS-08160-A4	8	160	9	54
M10	R-STUDS-10130	R-STUDS-10130-88	R-STUDS-10130-A4	10	130	12	-
	R-STUDS-10170	-	-	10	170	12	38
	R-STUDS-10190	-	-	10	190	12	58
M12	R-STUDS-12160	R-STUDS-12160-88	R-STUDS-12160-A4	12	160	14	1
	R-STUDS-12190	-	R-STUDS-12190-A4	12	190	14	31
	R-STUDS-12220	-	-	12	220	14	61
	R-STUDS-12260	-	-	12	260	14	101
	R-STUDS-12300	-	R-STUDS-12300-A4	12	300	14	141
M16	R-STUDS-16190	R-STUDS-16190-88	R-STUDS-16190-A4	16	190	18	-
	R-STUDS-16220	-	-	16	220	18	9
	R-STUDS-16260	-	-	16	260	18	49
	R-STUDS-16300	-	-	16	300	18	89
	R-STUDS-16380	-	-	16	380	18	169
M20	R-STUDS-20260	R-STUDS-20260-88	R-STUDS-20260-A4	20	260	22	-
	R-STUDS-20300	-	-	20	300	22	37
	R-STUDS-20350	-	-	20	350	22	87
M24	R-STUDS-24300	R-STUDS-24300-88	R-STUDS-24300-A4	24	300	26	-
M30	R-STUDS-30380	R-STUDS-30380-88	-	30	380	32	-

Installation data



R-STUDS

Size			M8	M10	M12	M16	M20	M24	M30
Thread diameter	d	[mm]	8	10	12	16	20	24	30
Hole diameter in substrate	d ₀	[mm]	10	12	14	18	24	28	35
Hole diameter in fixture	d _f	[mm]	9	12	14	18	22	26	32
Min. hole depth in substrate	h ₀	[mm]	h _{nom} + 5	h _{nom} + 5	h _{nom} + 5	h _{nom} + 5	h _{nom} + 5	h _{nom} + 5	h _{nom} + 5
Min. substrate thickness	h _{min}	[mm]	$\frac{h_{nom} + 30}{\geq 100}$	$\frac{h_{nom} + 30}{\geq 100}$	$\frac{h_{nom} + 30}{\geq 100}$	h _{nom} + 2d ₀	h _{nom} + 2d ₀	h _{nom} + 2d ₀	h _{nom} + 2d ₀
Installation torque	T _{inst}	[Nm]	10	20	40	80	120	180	300
Min. spacing	s _{min}	[mm]	40	40	40	50	60	70	85
Min. edge distance	c _{min}	[mm]	40	40	40	50	60	70	85
MINIMUM EMBEDMENT DEPTH									
Min. installation depth	h _{nom,min}	[mm]	60	70	80	100	120	140	165
MAXIMUM EMBEDMENT DEPTH									
Min. installation depth	h _{nom,max}	[mm]	160	200	240	320	400	480	600

Minimum working and curing time

R-KEM II

Resin temperature	Concrete temperature	Curing time*	Working time
[°C]	[°C]	[min]	[min]
5	-20	-	-
5	-15	-	-
5	-10	-	-
5	-5	8 h	70
5	0	4 h	45
5	5	2 h	25
10	10	1.5 h	15
15	15	1 h	9
20	20	45	5
25	30	30	2
25	35	-	-
25	40	-	-

*For wet concrete the curing time must be doubled

Installation data

R-KEMII-W

Resin temperature	Concrete temperature	Curing time*	Working time
[°C]	[°C]	[min]	[min]
5	-20	24 h	45
5	-15	18 h	30
5	-10	8 h	20
5	-5	5 h	11
5	0	2 h	7
5	5	1 h	5
10	10	45	2
15	15	30	1.5
20	20	15	1
25	30	-	-
25	35	-	-
25	40	-	-

*For wet concrete the curing time must be doubled

R-KEMII-S

Resin temperature	Concrete temperature	Curing time*	Working time
[°C]	[°C]	[min]	[min]
5	-20	-	-
5	-15	-	-
5	-10	-	-
5	-5	24 h	180
5	0	18 h	120
5	5	12 h	60
10	10	8 h	45
15	15	6 h	25
20	20	4 h	15
25	30	1.5 h	7
25	35	1 h	6
25	40	45	5

*For wet concrete the curing time must be doubled

Mechanical properties

Size			M8	M10	M12	M16	M20	M24	M30
R-STUDS Metric Threaded Rods - Steel Class 5.8									
Nominal ultimate tensile strength - tension	f_{uk}	[N/mm ²]	500	500	500	500	500	500	500
Nominal yield strength - tension	f_{yk}	[N/mm ²]	400	400	400	400	400	400	400
Cross sectional area - tension	A_s	[mm ²]	37	58	84	157	245	353	560
Elastic section modulus	W_{el}	[mm ³]	31	62	109	278	541	935	1868
Characteristic bending resistance	$M^0_{Rk,s}$	[Nm]	19	37	65	166	324	561	1124
Design bending resistance	M	[Nm]	15	30	52	133	259	449	899
Allowable bending resistance	M_{rec}	[Nm]	11	21	37	95	185	321	642

Mechanical properties

Size			M8	M10	M12	M16	M20	M24	M30
R-STUDS Metric Threaded Rods - Steel Class 8.8									
Nominal ultimate tensile strength - tension	f_{uk}	[N/mm ²]	800	800	800	800	800	800	800
Nominal yield strength - tension	f_{yk}	[N/mm ²]	640	640	640	640	640	640	640
Cross sectional area - tension	A_s	[mm ²]	37	58	84	157	245	353	560
Elastic section modulus	W_{el}	[mm ³]	31	62	109	278	541	935	1868
Characteristic bending resistance	$M_{Rk,s}^0$	[Nm]	30	60	105	266	519	898	1799
Design bending resistance	M	[Nm]	24	48	84	213	416	718	1439
Allowable bending resistance	M_{rec}	[Nm]	17	34	60	152	297	513	1028
R-STUDS Metric Threaded Rods - Steel Class A4									
Nominal ultimate tensile strength - tension	f_{uk}	[N/mm ²]	700	700	700	700	700	700	700
Nominal yield strength - tension	f_{yk}	[N/mm ²]	450	450	450	450	450	450	450
Cross sectional area - tension	A_s	[mm ²]	37	58	84	157	245	353	560
Elastic section modulus	W_{el}	[mm ³]	31	62	109	278	541	935	1868
Characteristic bending resistance	$M_{Rk,s}^0$	[Nm]	26	52	92	233	454	786	1574
Design bending resistance	M	[Nm]	17	34	59	149	291	504	1009
Allowable bending resistance	M_{rec}	[Nm]	12	24	42	107	208	360	721

Basic performance data

R-STUDS

Performance data for single anchor without influence of edge distance and spacing

Size			M8	M10	M12	M16	M20	M24	M30
Substrate	Non-cracked concrete								
MEAN ULTIMATE LOAD									
TENSION LOAD $N_{Ru,m}$									
R-STUDS METRIC THREADED RODS - STEEL CLASS 5.8									
Minimum embedment depth	[kN]	18.9	26.4	40.7	63.4	88.7	111.8	143.1	
Maximum embedment depth	[kN]	18.9	30.5	44.1	81.9	128.1	184.8	294.0	
R-STUDS METRIC THREADED RODS - STEEL CLASS 8.8									
Minimum embedment depth	[kN]	21.1	26.4	40.7	65.4	88.7	111.8	143.1	
Maximum embedment depth	[kN]	30.5	48.3	70.4	132.3	205.8	296.1	471.5	
R-STUDS METRIC THREADED RODS - STEEL CLASS A4									
Minimum embedment depth	[kN]	21.1	26.4	40.7	65.4	88.7	111.8	143.1	
Maximum embedment depth	[kN]	27.3	43.1	62.0	115.5	179.6	259.4	412.7	
SHEAR LOAD $V_{Ru,m}$									
R-STUDS METRIC THREADED RODS - STEEL CLASS 5.8									
Minimum embedment depth	[kN]	11.3	18.3	26.5	49.1	76.9	110.9	176.4	
Maximum embedment depth	[kN]	11.3	18.3	26.5	49.1	76.9	110.9	176.4	
R-STUDS METRIC THREADED RODS - STEEL CLASS 8.8									
Minimum embedment depth	[kN]	18.3	29.0	42.2	79.4	123.5	177.7	279.9	
Maximum embedment depth	[kN]	18.3	29.0	42.2	79.4	123.5	177.7	282.9	
R-STUDS METRIC THREADED RODS - STEEL CLASS A4									
Minimum embedment depth	[kN]	16.4	25.8	37.2	69.3	107.7	155.6	247.6	
Maximum embedment depth	[kN]	16.4	25.8	37.2	69.3	107.7	155.6	247.6	

Basic performance data

Size		M8	M10	M12	M16	M20	M24	M30
CHARACTERISTIC LOAD								
TENSION LOAD N_{Rk}								
R-STUDS METRIC THREADED RODS - STEEL CLASS 5.8								
Minimum embedment depth	[kN]	14.3	20.9	27.1	40.2	60.3	68.6	85.5
Maximum embedment depth	[kN]	18.0	29.0	42.0	78.0	122.0	176.0	280.0
R-STUDS METRIC THREADED RODS - STEEL CLASS 8.8								
Minimum embedment depth	[kN]	14.3	20.9	27.1	40.2	60.3	68.6	85.5
Maximum embedment depth	[kN]	29.0	46.0	67.0	126.0	196.0	235.2	311.0
R-STUDS METRIC THREADED RODS - STEEL CLASS A4								
Minimum embedment depth	[kN]	14.3	20.9	27.1	40.2	60.3	68.6	85.5
Maximum embedment depth	[kN]	26.0	41.0	59.0	110.0	171.0	235.2	311.0
SHEAR LOAD V_{Rk}								
R-STUDS METRIC THREADED RODS - STEEL CLASS 5.8								
Minimum embedment depth	[kN]	9.00	14.0	21.0	39.0	61.0	88.0	140.0
Maximum embedment depth	[kN]	9.00	14.0	21.0	39.0	61.0	88.0	140.0
R-STUDS METRIC THREADED RODS - STEEL CLASS 8.8								
Minimum embedment depth	[kN]	15.0	23.0	34.0	63.0	98.0	137.2	171.1
Maximum embedment depth	[kN]	15.0	23.0	34.0	63.0	98.0	141.0	224.0
R-STUDS METRIC THREADED RODS - STEEL CLASS A4								
Minimum embedment depth	[kN]	13.0	20.0	29.0	55.0	86.0	124.0	171.1
Maximum embedment depth	[kN]	13.0	20.0	29.0	55.0	86.0	124.0	196.0
DESIGN LOAD								
TENSION LOAD N_{Rd}								
R-STUDS METRIC THREADED RODS - STEEL CLASS 5.8								
Minimum embedment depth	[kN]	6.82	11.6	15.1	22.3	33.5	38.1	47.5
Maximum embedment depth	[kN]	12.0	19.3	28.0	52.0	81.3	117.3	172.8
R-STUDS METRIC THREADED RODS - STEEL CLASS 8.8								
Minimum embedment depth	[kN]	6.82	11.6	15.1	22.3	33.5	38.1	47.5
Maximum embedment depth	[kN]	18.2	30.7	44.7	71.5	111.7	130.7	172.8
R-STUDS METRIC THREADED RODS - STEEL CLASS A4								
Minimum embedment depth	[kN]	6.82	11.6	15.1	22.3	33.5	38.1	47.5
Maximum embedment depth	[kN]	13.9	21.9	31.6	58.8	91.4	130.7	172.8
SHEAR LOAD V_{Rd}								
R-STUDS METRIC THREADED RODS - STEEL CLASS 5.8								
Minimum embedment depth	[kN]	7.20	11.2	16.8	31.2	48.8	70.4	112.0
Maximum embedment depth	[kN]	7.20	11.2	16.8	31.2	48.8	70.4	112.0
R-STUDS METRIC THREADED RODS - STEEL CLASS 8.8								
Minimum embedment depth	[kN]	12.0	18.4	27.2	50.4	78.4	91.5	114.0
Maximum embedment depth	[kN]	12.0	18.4	27.2	50.4	78.4	112.8	179.2
R-STUDS METRIC THREADED RODS - STEEL CLASS A4								
Minimum embedment depth	[kN]	8.33	12.8	18.6	35.3	55.1	79.5	114.0
Maximum embedment depth	[kN]	8.33	12.8	18.6	35.3	55.1	79.5	125.6

Basic performance data

Size		M8	M10	M12	M16	M20	M24	M30
RECOMMENDED LOAD								
TENSION LOAD N_{rec}								
R-STUDS METRIC THREADED RODS - STEEL CLASS 5.8								
Minimum embedment depth	[kN]	4.87	8.29	10.8	16.0	23.9	27.2	33.9
Maximum embedment depth	[kN]	5.87	13.8	20.0	37.1	58.1	83.8	123.4
R-STUDS METRIC THREADED RODS - STEEL CLASS 8.8								
Minimum embedment depth	[kN]	4.87	8.29	10.8	16.0	23.9	27.2	33.9
Maximum embedment depth	[kN]	13.0	21.9	31.9	51.1	79.8	93.4	123.4
R-STUDS METRIC THREADED RODS - STEEL CLASS A4								
Minimum embedment depth	[kN]	4.87	8.29	10.8	16.0	23.9	27.2	33.9
Maximum embedment depth	[kN]	9.93	15.7	22.5	42.0	65.3	93.4	123.4
SHEAR LOAD V_{rec}								
R-STUDS METRIC THREADED RODS - STEEL CLASS 5.8								
Minimum embedment depth	[kN]	5.14	8.00	12.0	22.3	34.9	50.3	80.0
Maximum embedment depth	[kN]	5.14	8.00	12.0	22.3	34.9	50.3	80.0
R-STUDS METRIC THREADED RODS - STEEL CLASS 8.8								
Minimum embedment depth	[kN]	8.57	13.1	19.4	36.0	56.0	65.4	81.5
Maximum embedment depth	[kN]	8.57	13.1	19.4	36.0	56.0	80.6	128.0
R-STUDS METRIC THREADED RODS - STEEL CLASS A4								
Minimum embedment depth	[kN]	5.95	9.16	13.3	25.2	39.4	56.8	81.5
Maximum embedment depth	[kN]	5.95	9.16	13.3	25.2	39.4	56.8	89.7

Design performance data

R-STUDS

Size			M8	M10	M12	M16	M20	M24	M30
TENSION LOAD									
STEEL FAILURE; STEEL CLASS 5.8									
Characteristic resistance	$N_{Rk,s}$	[kN]	18.00	29.00	42.00	78.00	122.00	176.00	280.00
Partial safety factor	γ_{Ms}	-	1.50	1.50	1.50	1.50	1.50	1.50	1.50
STEEL FAILURE; STEEL CLASS 8.8									
Characteristic resistance	$N_{Rk,s}$	[kN]	29.00	46.00	67.00	126.00	196.00	282.00	448.00
Partial safety factor	γ_{Ms}	-	1.50	1.50	1.50	1.50	1.50	1.50	1.50
STEEL FAILURE; STEEL GRADE A4-70									
Characteristic resistance	$N_{Rk,s}$	[kN]	26.00	41.00	59.00	110.00	171.00	247.00	392.00
Partial safety factor	γ_{Ms}	-	1.87	1.87	1.87	1.87	1.87	1.87	1.87
COMBINED PULL-OUT AND CONCRETE CONE FAILURE; NON-CRACKED CONCRETE, C20/25 (40°C/24°C)									
Characteristic bond resistance	T_{Rk}	[N/mm ²]	9.50	9.50	9.00	8.00	8.00	6.50	5.50
[English]: Współczynnik dla obciążeń długotrwałych	ψ_{sus}^0	-	0.81	0.81	0.81	0.81	0.81	0.81	0.81
COMBINED PULL-OUT AND CONCRETE CONE FAILURE; NON-CRACKED CONCRETE, C20/25 (80°C/50°C)									
Characteristic bond resistance	T_{Rk}	[N/mm ²]	8.00	8.00	7.50	7.00	6.50	5.00	4.50
[English]: Współczynnik dla obciążeń długotrwałych	ψ_{sus}^0	-	0.76	0.76	0.76	0.76	0.76	0.76	0.76
COMBINED PULL-OUT AND CONCRETE CONE FAILURE									
Installation safety factor	γ_{inst}	-	1.40	1.20	1.20	1.20	1.20	1.20	1.20
Increasing factors for $N_{Rd,p}$ - C30/37	ψ_c	-	1.04	1.04	1.04	1.04	1.00	1.00	1.00
Increasing factors for $N_{Rd,p}$ - C40/50	ψ_c	-	1.07	1.07	1.07	1.07	1.00	1.00	1.00
Increasing factors for $N_{Rd,p}$ - C50/60	ψ_c	-	1.09	1.09	1.09	1.09	1.00	1.00	1.00
CONCRETE CONE FAILURE									
Installation safety factor	γ_{inst}	-	1.40	1.20	1.20	1.20	1.20	1.20	1.20
Factor for non-cracked concrete	$k_{ucr,N}$	-	11.00	11.00	11.00	11.00	11.00	11.00	11.00
Edge distance	$c_{cr,N}$	[mm]	1.5*h _{ef}	1.5*h _{ef}	1.5*h _{ef}	1.5*h _{ef}	1.5*h _{ef}	1.5*h _{ef}	1.5*h _{ef}
Spacing	$s_{cr,N}$	[mm]	3.0*h _{ef}	3.0*h _{ef}	3.0*h _{ef}	3.0*h _{ef}	3.0*h _{ef}	3.0*h _{ef}	3.0*h _{ef}
CONCRETE SPLITTING FAILURE									
Installation safety factor	γ_{inst}	-	1.40	1.20	1.20	1.20	1.20	1.20	1.20

Design performance data

Size			M8	M10	M12	M16	M20	M24	M30
SHEAR LOAD									
STEEL FAILURE; STEEL CLASS 5.8									
Characteristic resistance without lever arm	$V_{Rk,s}$	[kN]	9.00	14.00	21.00	39.00	61.00	88.00	140.00
Ductility factor	k_7	-	0.80	0.80	0.80	0.80	0.80	0.80	0.80
Characteristic resistance with lever arm	$M_{Rk,s}$	[Nm]	19.00	37.00	65.00	166.00	324.00	561.00	1124.00
Partial safety factor	γ_{Ms}	-	1.25	1.25	1.25	1.25	1.25	1.25	1.25
STEEL FAILURE; STEEL CLASS 8.8									
Characteristic resistance without lever arm	$V_{Rk,s}$	[kN]	15.00	23.00	34.00	63.00	98.00	141.00	224.00
Ductility factor	k_7	-	0.80	0.80	0.80	0.80	0.80	0.80	0.80
Characteristic resistance with lever arm	$M_{Rk,s}$	[Nm]	30.00	60.00	105.00	266.00	519.00	898.00	1799.00
Partial safety factor	γ_{Ms}	-	1.25	1.25	1.25	1.25	1.25	1.25	1.25
STEEL FAILURE; STEEL GRADE A4-70									
Characteristic resistance without lever arm	$V_{Rk,s}$	[kN]	13.00	20.00	29.00	55.00	86.00	124.00	196.00
Ductility factor	k_7	-	0.80	0.80	0.80	0.80	0.80	0.80	0.80
Characteristic resistance with lever arm	$M_{Rk,s}$	[Nm]	26.00	52.00	92.00	233.00	454.00	786.00	1574.00
Partial safety factor	γ_{Ms}	-	1.56	1.56	1.56	1.56	1.56	1.56	1.56
CONCRETE PRY-OUT FAILURE									
Factor	k	-	2.00	2.00	2.00	2.00	2.00	2.00	2.00
Installation safety factor	γ_{inst}	-	1.00	1.00	1.00	1.00	1.00	1.00	1.00
CONCRETE EDGE FAILURE									
Anchor diameter	d_{nom}	[mm]	8.00	10.00	12.00	16.00	20.00	24.00	30.00
Effective length of anchor	ℓ_f	[mm]	min ($h_{ef}; 12d_{nom}$)	min ($h_{ef}; 12d_{nom}$)	min ($h_{ef}; 12d_{nom}$)	min ($h_{ef}; 12d_{nom}$)	min ($h_{ef}; 12d_{nom}$)	min ($h_{ef}; 12d_{nom}$)	-
Installation safety factor	γ_{inst}	-	1.00	1.00	1.00	1.00	1.00	1.00	1.00
Effective length of anchor	ℓ_f	[mm]	-	-	-	-	-	-	min ($h_{ef}; 300$)

Combined pull-out and concrete cone failure (EN 1992-4:2018, p.7.2.1.6., 7.14 - $N_{Rk,p}^0 = \psi_{sus}^0 * \tau_{Rk} * n * d * h_{ef}$).
 $h_{ef} = h_{nom}$

Product commercial data

Product Code	Volume [ml]	Quantity [pcs]			Weight [kg]			Bar Codes
		Box	Outer	Pallet	Box	Outer	Pallet	
R-KEM-II-175 ¹⁾	175	10	10	840	3.8	3.8	348.1	5906675050249
R-KEM-II-300 ¹⁾	300	10	10	840	5.9	5.9	529.0	5906675050256
R-KEM-II-380 ¹⁾	380	10	10	560	8.2	8.2	486.3	5906675097770
R-KEM-II-410 ¹⁾	410	10	10	560	8.4	8.4	498.7	5906675408163
R-KEM-II-175-W ¹⁾	175	10	50	600	3.8	19.2	260.6	5906675064659
R-KEM-II-300-W ¹⁾	300	10	10	840	5.9	5.9	527.2	5906675064666
R-KEM-II-175-S ¹⁾	175	10	50	600	6.0	30.0	390.0	5906675064635
R-KEM-II-300-S ¹⁾	300	10	50	600	6.0	30.0	390.0	5906675064642
R-KEM-II-175-SET ¹⁾	175	5	5	525	3.0	3.0	348.3	5906675057866
R-KEM-II-300-SET ¹⁾	300	5	5	320	4.9	4.9	345.9	5906675057859
R-KEM-II-300-STONE ¹⁾	300	10	50	840	6.0	30.0	534.0	5906675038124
R-KEM-II-410-STONE ¹⁾	410	10	10	560	8.4	8.4	498.7	5906675424958
R-KEM-II-300-GREY ¹⁾	300	10	50	840	6.0	30.0	534.0	5906675038131
R-KEM-II-410-GREY ¹⁾	410	10	10	560	8.4	8.4	498.7	5906675424941
R-KEM-II-300-SV ¹⁾	300	10	10	840	5.9	5.9	529.0	5906675417073

1) ETA-12/0394
 2) ETA-21/0243