

John Newton & Co Ltd
t/a Newton Waterproofing Systems

Newton House
17-19 Sovereign Way
Tonbridge
Kent TN9 1RH

Tel: 01732 360095

e-mail: tech@newtonwaterproofing.co.uk

website: www.newtonwaterproofing.co.uk



Agrement Certificate

94/3010

Product Sheet 8

NEWTON WATERPROOFING SYSTEMS

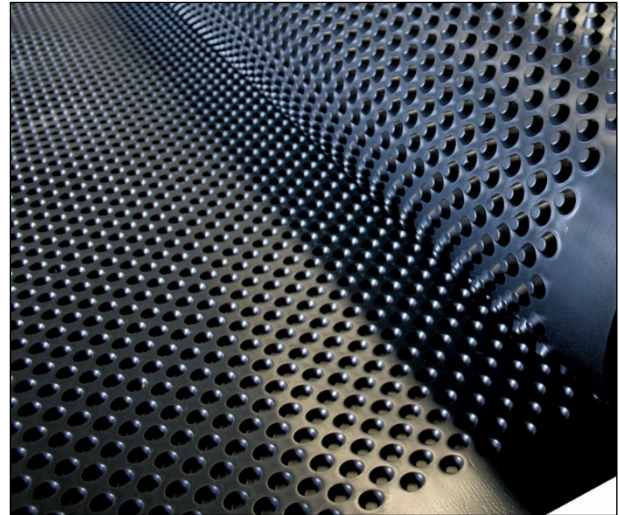
NEWTON 508 ECO FLOOR

This Agrément Certificate Product Sheet⁽¹⁾ relates to Newton 508 Eco Floor, a moulded, recycled HDPE membrane for use as waterproofing and damp-proofing on floors, over a contaminated or damp background, to support a flooring. The product is part of the Newton CDM System, Type C, below-ground internal waterproofing system and can also be used above ground as a damp-proofing membrane.

(1) Hereinafter referred to as 'Certificate'.

CERTIFICATION INCLUDES:

- factors relating to compliance with Building Regulations where applicable
- factors relating to additional non-regulatory information where applicable
- independently verified technical specification
- assessment criteria and technical investigations
- design considerations
- installation guidance
- regular surveillance of production[†]
- formal three-yearly review.[†]



KEY FACTORS ASSESSED

Resistance to water and water vapour — the membrane is water resistant and has a high resistance to water vapour transmission (see section 6).

Resistance to salt transfer — the membrane provides an effective barrier to the transmission of salts or other contaminants from the substrate (see section 8).

Properties in relation to fire — the membrane is not classified in accordance with BS EN 13501-1 : 2018 and its use is restricted under the national Building Regulations in some cases (see section 9).

Resistance to puncture and loading — the membrane has a high resistance to puncture and will not be damaged by normal foot traffic during installation, or while laying concrete or screeding. It can support the long-term loadings likely to be experienced in service without undue deformation (see section 10).

Durability — under normal conditions of use the membrane, when used as part of a system, will provide an effective barrier to the transmission of salts, liquid water and water vapour for the life of the structure in which it is incorporated (see section 12).

The BBA has awarded this Certificate to the company named above for the product described herein. This product has been assessed by the BBA as being fit for its intended use provided it is installed, used and maintained as set out in this Certificate.

On behalf of the British Board of Agrément

Date of Second issue: 9 December 2021

Originally certificated on 12 September 2017

Hardy Giesler
Chief Executive Officer

This Certificate was amended on 22 May 2024 as part of a transition of The BBA Agrément Certificate scheme delivered under the BBA's ISO/IEC 17020 accreditation. This Certificate was issued originally under accreditation to ISO/IEC 17065. Sections marked with the symbol † are not issued under accreditation. Full conversion to the ISO/IEC 17020 format will take place at the next Certificate review. The BBA is a UKAS accredited Inspection Body (No.4345). Readers **MUST** check the validity of this Agrément Certificate by either referring to the BBA website or contacting the BBA directly. Any photographs are for illustrative purposes only, do not constitute advice and must not be relied upon.

British Board of Agrément

Bucknalls Lane
Watford
Herts WD25 9BA

©2021

Page 1 of 13

tel: 01923 665300
clientservices@bbacerts.co.uk
www.bbacerts.co.uk

Regulations

In the opinion of the BBA, Newton 508 Eco Floor, if installed, used and maintained in accordance with this Certificate, can satisfy or contribute to satisfying the relevant requirements of the following Building Regulations (the presence of a UK map indicates that the subject is related to the Building Regulations in the region or regions of the UK depicted):



The Building Regulations 2010 (England and Wales) (as amended)

Requirement:	B3(4)	Internal fire spread – structure
Comment:		The product can contribute to satisfying this Requirement. See section 9.1 of this Certificate.
Requirement:	B4(1)	External fire spread
Comment:		The product is restricted by this Requirement. See section 9 of this Certificate.
Requirement:	C2(a)(b)	Resistance to moisture
Comment:		The product, when used as part of a system, adequately resists the passage of moisture. See section 6.1 of this Certificate.
Regulation:	7(1)	Materials and workmanship
Comment:		The products are acceptable. See section 12 and the <i>installation</i> part of this Certificate.



The Building (Scotland) Regulations 2004 (as amended)

Regulation:	8(1)	Durability, workmanship and fitness of materials
Comment:		The product is acceptable. See section 12 and the <i>Installation</i> part of this Certificate.
Regulation:	9	Building standards applicable to construction
Standard:	2.4	Cavities
Comment:		The system can contribute to satisfying this Standard with respect to clause 2.4.2 ⁽¹⁾⁽²⁾ . See section 9.1 of this Certificate.
Standard:	3.3	Flooding and ground water
Comment:		The product, when used as part of a system, can contribute to minimising or eliminating the effects of flooding on the building fabric and/or the building element, with reference to clause 3.3.1 ⁽¹⁾⁽²⁾ . See section 6.1 of this Certificate.
Standard:	3.4	Moisture from the ground
Comment:		The product, when used as part of a system, adequately resists the passage of moisture, with reference to clauses 3.4.1 ⁽¹⁾⁽²⁾ , 3.4.2 ⁽¹⁾⁽²⁾ , 3.4.5 ⁽¹⁾⁽²⁾ , 3.4.6 ⁽¹⁾⁽²⁾ and 3.4.7 ⁽¹⁾⁽²⁾ . See section 6.1 of this Certificate.
Standard:	3.6(a)	Surface water drainage
Comment:		The product, when used as part of a system, can contribute to satisfying this Standard, with reference to clause 3.6.3 ⁽¹⁾⁽²⁾ . See section 6.1 of this Certificate.
Standard:	3.10	Precipitation
Comment:		The product, when used as part of a system, adequately resists the passage of moisture, with reference to clause 3.10.1 ⁽¹⁾⁽²⁾ . See section 6.1 of this Certificate.
Standard:	7.1(a)	Statement of sustainability
Comment:		The product can contribute to meeting the relevant requirements of Regulation 9, Standards 1 to 6 and therefore will contribute to a construction meeting a bronze level of sustainability as defined in this Standard.

Regulation:	12	Building standards applicable to conversions
Comment:	Comments in relation to the product under Regulation 9, Standards 1 to 6 also apply to this Regulation, with reference to clause 0.12.1 ⁽¹⁾⁽²⁾ and Schedule 6 ⁽¹⁾⁽²⁾ .	
	(1) Technical Handbook (Domestic). (2) Technical Handbook (Non-Domestic).	



The Building Regulations (Northern Ireland) 2012 (as amended)

Regulation:	23(a)(i)	Fitness of materials and workmanship
Comment:	(iii)(b)(i)	The product is acceptable. See section 12 and the <i>Installation</i> part of this Certificate.
Regulation:	28(a)(b)	Resistance to moisture and weather
Comment:	The product, when used as part of a system, adequately resists the passage of moisture. See section 6.1 of this Certificate.	
Regulation:	35(4)	Internal fire spread - structure
Comment:	The product can contribute to satisfying this Regulation. See section 9.1 of this Certificate.	

Construction (Design and Management) Regulations 2015

Construction (Design and Management) Regulations (Northern Ireland) 2016

Information in this Certificate may assist the client, designer (including Principal Designer) and contractor (including Principal Contractor) to address their obligations under these Regulations.

See sections: 1 *Description* (1.1) of this Certificate.

Additional Information

NHBC Standards 2021

In the opinion of the BBA, Newton 508 Eco Floor, if installed, used and maintained in accordance with this Certificate, can satisfy or contribute to satisfying the relevant requirements in relation to *NHBC Standards*, Chapters 5.1 *Substructures and ground bearing floors*, 5.2 *Suspended ground floors* and 5.4 *Waterproofing of basements and other below ground structures*.

Where Grade 3 protection is required and the below-ground wall retains more than 600 mm (measured from the top of the retained ground to the lowest finished floor level), the product should be used in combination with either a Type A or Type B waterproofing protection.

In the opinion of the BBA, use of the product on existing structures, if installed and used in accordance with this Certificate, can satisfy or contribute to satisfying the relevant requirements in relation to *NHBC Standards for Conversions and Renovations*, taking account of other relevant guidance within the chapter and the suitability of the substrate to receive the product.

CE marking

The Certificate holder has taken the responsibility of CE marking the product in accordance with harmonised European standard BS EN 13967 : 2012.

1 Description

1.1 Newton 508 Eco Floor membrane is a brown, recycled high-density polyethylene (HDPE) sheet with moulded studs at 28 mm centres, for use as part of Newton CDM System⁽¹⁾, or above ground as a damp-proofing membrane. The membrane is manufactured to the nominal characteristics given in Table 1.

(1) Newton CDM System is a below-ground waterproofing system for both new build and refurbishment projects, consisting of Newton waterproof membranes linked to a water drainage system to convey excess water safely away from the property.

Table 1 Nominal characteristics

Characteristic (unit)	Newton 508 Eco Floor
Thickness (mm)	0.8
Dome height (mm)	8.0
Weight per unit area (kg·m ⁻²)	0.8
Roll length (m)	20.0
Roll width (m)	2.5
Weight per roll (kg)	41.8
Air gap volume (litres per m ²)	5.3
Watertightness 60 kPa	Pass
Compressive strength (kN·m ⁻²) ⁽¹⁾	520
Compressive strength (kN·m ⁻²) ⁽²⁾	21

(1) BS EN ISO 25619-2 – Destructive test and should not be used for design purposes

(2) BS EN ISO 25619-1

1.2 Ancillary items used with the membrane and included in this assessment are:

- Newton Waterseal Tape — black butyl tape for sealing joints in the membrane
- Newton Waterseal Rope — black butyl beading for sealing the air gap around pipes and the edges of the membrane, and joining floor and wall membranes
- Newton Mastic Sealer — silicone sealant for sealing the Newton membranes in an above-ground situation where no hydrostatic pressure is possible
- Newton Overtape — self-adhesive membrane strip for sealing junctions between walls and floors, and for sealing joints at corners. It can also be used for sealing around service penetrations
- Newton Basedrain — a PVC-U system of drainage channels with 18 mm diameter holes every 100 mm along its length, to collect at the base of the membrane and conduct it to a collection point for subsequent discharge. It is available in straight lengths and also in preformed angles for use at corners and junctions. Newton Basedrain is a part of the Newton CDM System internal cavity drain system
- Newton Floordrain — as Newton Basedrain but without the upstand or flange. Floordrain is used to receive water from floor construction joints and to connect Basedrain to internally sited sumps
- Newton Drainage Adaptor — changes profile from Basedrain or Floordrain to receive 63 mm outside diameter pipe for connections to services or to sumps.

1.3 Also for use with the products, but outside the scope of this Certificate are:

- Newton CDM Lime Inhibitor, for use prior to the installation of a Newton CDM cavity drain membrane waterproofing system to prevent the ‘leaching’ of free lime from the concrete
- Newton Basedrain Inspection Port — large aperture port that allows access to the Basedrain drainage system for inspection and maintenance
- Newton Condensation Strip — a strip of 8 mm membrane that creates an opening that allows condensation forming on the face of the wall membrane to be received by the Basedrain drainage system
- Newton Fibran XPS 500-C Insulation — 50 mm insulated spacer that ensures that the floor membrane is above the Basedrain drainage system.

1.4 Newton CDM System is outside the scope of this Certificate.

2 Manufacture

2.1 The membrane is formed in a continuous process in which recycled HDPE is extruded into sheets and the studs are impression-formed.

2.2 As part of the assessment and ongoing surveillance of product quality, the BBA has:

- agreed with the manufacturer the quality control procedures and product testing to be undertaken
- assessed and agreed the quality control operated over batches of incoming materials
- monitored the production process and verified that it is in accordance with the documented process
- evaluated the process for management of nonconformities
- checked that equipment has been properly tested and calibrated
- undertaken to carry out the above measures on a regular basis through a surveillance process, to verify that the specifications and quality control operated by the manufacturer are being maintained.

2.3 The management systems of Newton Waterproofing Systems have been assessed and registered as meeting the requirements of BES 6001 by BRE Global Certification (Certificate RS0057).

3 Delivery and site handling

3.1 The membrane is delivered to site in rolls packaged in woven plastic sacks, bearing the product and Certificate holder's name, and the BBA logo incorporating the number of this Certificate.

3.2 Rolls should be stored on end, under cover and protected from sharp objects, sunlight and high temperatures.

3.3 The packaging details of the ancillary items are shown in Table 2.

Table 2 Packaging details

Item	Dimensions/volume	Packaging/quantity
Newton Waterseal Tape	22.5 m long x 30 mm wide x 2 mm thick	12 rolls per box
Newton Waterseal Rope	4.75 m long x 10 mm diameter	12 rolls per box
Newton Mastic Sealer	0.4 litre cartridge	25 cartridges per carton
Newton Overtape	20 m x 150 mm in black or white 20 m x 100 mm in black	2 rolls per box at 150 mm wide 4 rolls per box at 100 mm wide
Newton Basedrain and Newton Floordrain	2 m lengths	6 lengths per pack

Assessment and Technical Investigations

The following is a summary of the assessment and technical investigations carried out on Newton 508 Eco Floor.

Design Considerations

4 Use

4.1 Newton 508 Eco Floor is satisfactory for use as a damp-proofing membrane on floors above ground and as a waterproofing membrane below ground as part of Newton CDM System⁽¹⁾, in new construction or in existing buildings over a contaminated or damp background. It can support a screed or flooring in the following situations:

- on damp floors in underground situations subject to high groundwater levels and perennial moisture
- over floors which have a friable or painted surface, are contaminated with oil or mould, or have a high salt content
- as a waterproofing membrane in areas subject to vibration, as part of the Newton CDM System.

(1) Newton CDM System is a below-ground waterproofing system for both new build and refurbishment projects, consisting of Newton waterproof membranes linked to a water drainage system to convey excess water safely away from the property.

4.2 Depending on the application required and the site conditions, the membrane may be used as:

- an underfloor damp-proof membrane (508R only)
- part of Newton CDM System for use below ground, covering floor, walls and vaulted ceiling, with provision made for disposing of water build-up behind the membrane via a sump and pump. If available and considered suitable, natural gravity feed drainage that is below the internal basement floor level can be used instead of a sump and pump, in which case the advice of the Certificate holder should be sought.

4.3 The membrane has not been assessed for use in chemically contaminated areas, such as brownfield sites.

4.4 The membrane is satisfactory for use in Type C (drained protection) constructions in accordance with BS 8102 : 2009.

4.5 Under normal operating conditions, the membrane is not affected by underfloor heating.

5 Practicability of installation

The membrane should only be installed by installers who have been trained and approved by the Certificate holder.

6 Resistance to water and water vapour



6.1 The membrane is water resistant and has a high resistance to water vapour transmission. However, the system as installed is not resistant to hydrostatic pressure and, consequently, the measures described in the Installation part of this Certificate must be followed to ensure that the membrane acts as a drainage layer with no excessive build-up of water behind the system.

6.2 All joints and fixings must be sealed with Newton sealing products, and drainage channels and drainage systems or sumps and pumps should be installed as necessary to disperse excess or standing water.

7 Risk of condensation

7.1 There is need to control the generation and dispersal of moisture in the internal environment and to select appropriate and robust designs to minimise the risk of both surface and interstitial condensation, especially where insulation is used over the membrane.

7.2 In common with most waterproofing membranes, the product has a very high resistance to vapour diffusion, and when placed on the cold side of a construction may increase the risk of interstitial condensation. A calculation should be carried out to BS 5250 : 2011 and designers should consider appropriate techniques for managing the safe egress of moisture vapour (such as control of the internal environment or use of a vapour control layer on the warm side of the insulation), and in particular the effect of moisture on any materials at, or in contact with, materials below the local dew-point.

8 Resistance to salt transfer

The membrane provides an effective barrier to the transmission of salts or other contaminants from the substrate.

9 Properties in relation to fire



9.1 The membrane has not been classified in accordance with BS EN 13501-1 : 2018. Where the product forms the face of a cavity, the permissible area of use and the spacing of cavity barriers are restricted by the national Building Regulations.



9.2 When used as part of the external wall above ground level the membranes should not be used on buildings in England and Wales that have a storey at least 18 m above ground level and contain: one or more dwellings, an institution, a room for residential purposes (excluding any room in a hostel, hotel or boarding house), student accommodation, care homes, sheltered housing, hospitals or dormitories in boarding schools.

10 Resistance to puncture and loading

10.1 The membrane has a high resistance to puncture and will not be damaged by normal foot traffic during installation or while laying concrete or screeding to BS 8204-1 : 2003.

10.2 The membrane can support the long-term imposed loadings defined in the UK National Annex to BS EN 1991-1-1 : 2002, Table NA.2, categories A to D, without undue deformation.

11 Maintenance

11.1 As the membrane is confined within a wall or floor space and has suitable durability (see section 12 of this Certificate), maintenance is not required.

11.2 Regular maintenance of all drainage systems, sumps and pumps must be conducted to ensure that a build-up of water does not occur behind the membrane.

12 Durability



Under normal conditions of use the membrane, when used as part of a system, will provide an effective barrier to the transmission of salts, liquid water and water vapour for the life of the structure in which it is incorporated.

13 Reuse and recyclability

The product comprises recycled HDPE, which can be recycled.

14 Survey

14.1 Where the property is below ground, or where conditions are damp, a full survey by a specialist waterproofing surveyor is necessary to diagnose the cause and to establish if treatment is required.

14.2 If rising damp to above-ground elevations is found, a remedial treatment is conducted in accordance with the relevant Agrément Certificate, BS 6576 : 2005 and the Property Care Association Code of Practice, 2013.

14.3 Appropriate remedial measures must be taken to rectify major causes of damp conditions or water ingress, and to repair structural defects.

15 Surface preparation

15.1 When the membrane is used in new constructions, the concrete base must be laid in accordance with BS EN 1992-3 : 2006.

15.2 If a board covering is to be laid directly on the membrane, the concrete base must have a surface regularity with a maximum permissible departure of 5 mm from the underside of a 2 m straight edge, resting in contact with the floor, in accordance with BS 8204-1 : 2003.

15.3 When the membrane is used in existing buildings, any unsound screed is removed to expose the substrate, which is cleaned with a stiff brush to remove loose material, laitance, salt residue, mould or adhesive. If mould is present, the substrate is treated with an HSE-approved fungicidal wash.

15.4 Uneven floor substrates should be levelled with a levelling/smoothing compound, to the tolerance described in section 15.2. The Certificate holder can advise on suitable materials⁽¹⁾. They should be allowed to dry thoroughly before the membrane is applied above. When installed on walls, the membranes are able to be able to accommodate uneven substances.

(1) Outside of the scope of this Certificate.

16 Procedure

General

16.1 When used as part of the Newton CDM System, Newton 508 Eco Floor may be used in combination with any of the appropriate Newton membranes which are the subject of Product Sheets 1 to 4, 6 and 7.

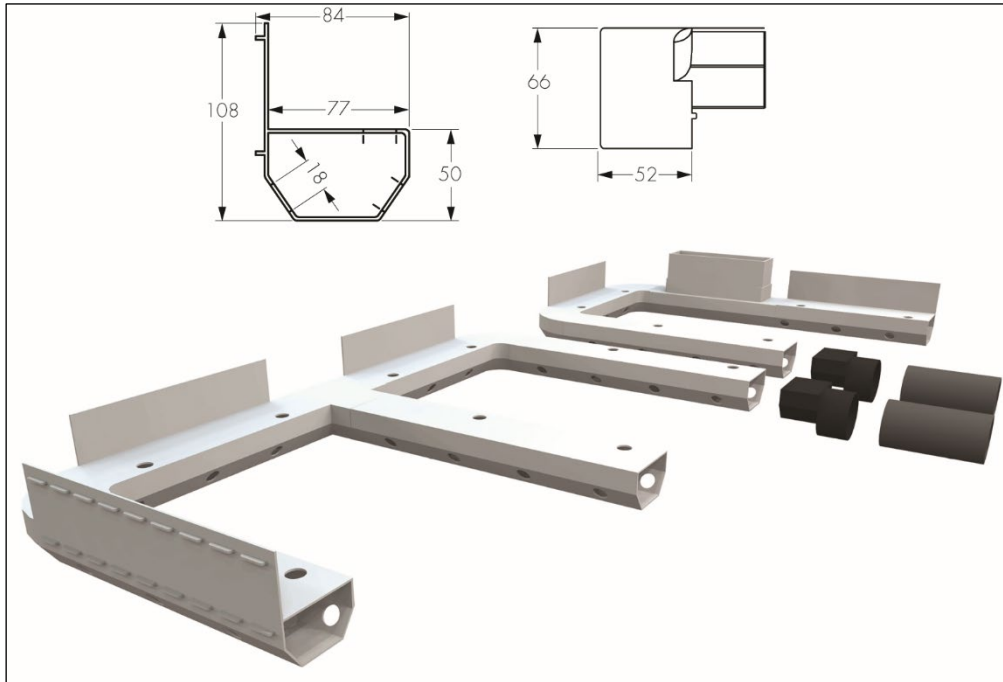
Floors

16.2 When used below ground level, Newton 508 Eco Floor should be used as part of Newton CDM System, with provision made for the disposal of any water which may find its way into the structure⁽¹⁾. This is achieved by the installation of Newton Basedrain around the perimeter of rooms and Floordrain⁽¹⁾ across the room, above the line of the construction joints, and, connecting into the perimeter Basedrain. Water ingress is conveyed either to the outside of the structure and discharged via safe natural drainage (drainage that cannot block or generate back-pressure), or to a Newton sump and subsequently pumped out of the structure.

(1) Prior to the installation of the Newton Floordrain membrane, Newton Lime Inhibitor should be applied in accordance with the recommendations of BS 8102 : 2009.

16.3 Newton Basedrain (see Figure 1) is installed at wall/floor junctions around the perimeter of walls to convey ingressing water to a collection point (sump). The Basedrain can be cut on site using a handsaw to form mitred joints around corners, or preformed angled pieces can be used. In either case, sections of Basedrain are joined together using a tape supplied by the Certificate holder. Newton Floordrain should be used across construction joints in the slab.

Figure 1 Newton Basedrain (all dimensions in mm)



16.4 Newton Basedrain is either sunk into formed or cut channels in the floor slab adjacent to the wall, or placed on the existing floor with insulation tested for this use and suitably butted up to it (see Figures 2 and 3). In the latter case, the insulation may be subjected to some level of water exposure; therefore, water-resistant grades tested for suitability by the Certificate holder must be used. The membrane should be laid directly on top of the insulation and a 65 mm thick screed or C4 T&G chipboard flooring used over the top. If T&G chipboard is used, the boards require to be fixed to the concrete floor with a minimum of five fixings. The Certificate holder can advise on this.

16.5 The membrane is rolled out 'studs down' over the floor, and consecutive membrane widths are laid so the flanged edge overlaps the first sheet by the width of the 70 mm flange. The joints are sealed with Newton Waterseal Tape.

16.6 The membrane is cut within 5 mm of any pipes and services in the floor, and the gap filled with Newton Waterseal Rope. A patch of membrane is overlaid and sealed to the services with Newton Waterseal Rope, and its circumference sealed with Newton Waterseal Tape.

16.7 Penetrations through the floor membrane should be sealed with Newton Waterseal Tape or Waterseal Rope or Newton Overtape. The penetrating item may require application of a primer to ensure adhesion of the Newton products. Advice should be sought on this from the Certificate holder.

16.8 In below-ground installations, the formation of open joints, either at the Basedrain/membrane junction or at other locations in the installation, may need to be reconsidered in cases where ingress of gases, odours or vermin is a possibility (such as in proximity to food preparation areas). The advice of the Certificate holder should be sought in these situations.

Figure 2 Installation detail – channel on slab

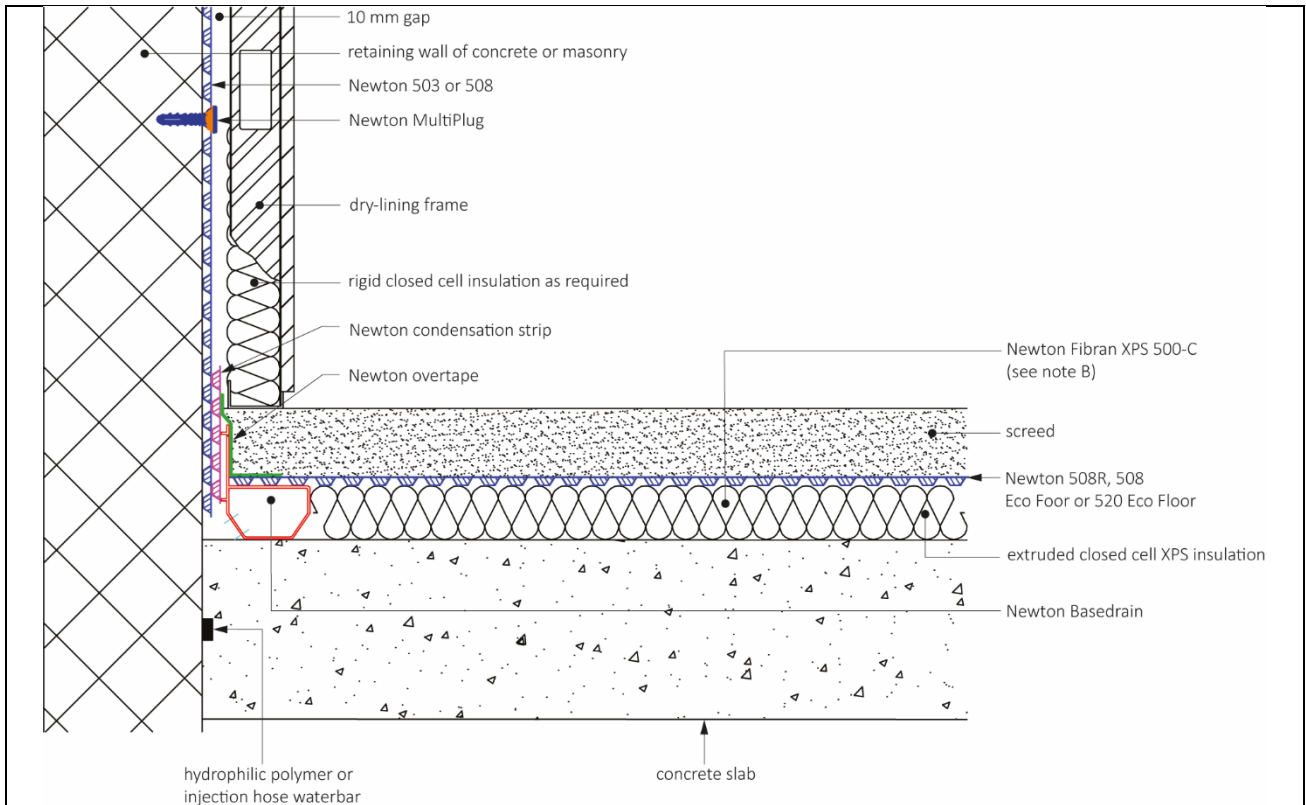
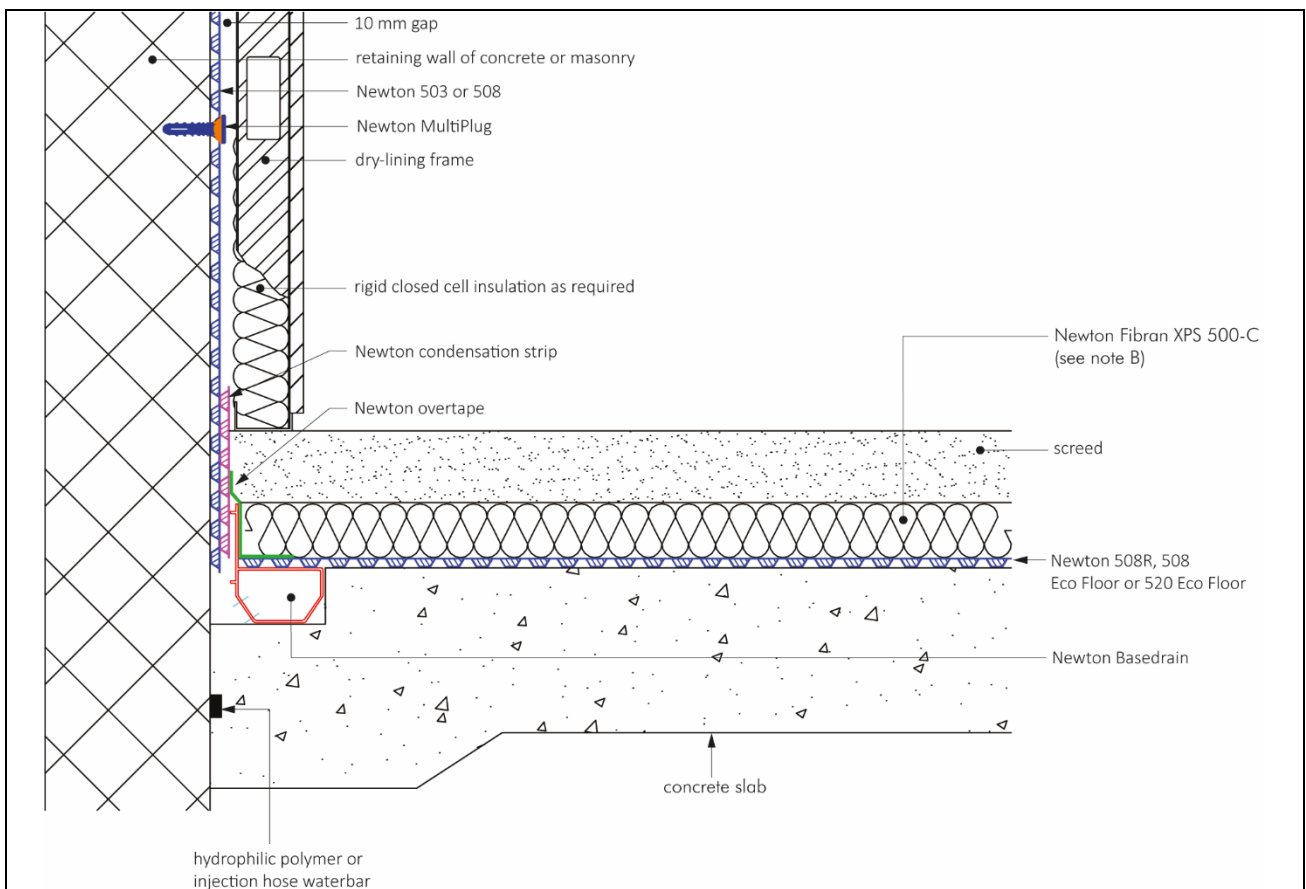


Figure 3 Installation detail – preformed recess



17 Floor membrane coverings

17.1 If required, extruded closed-cell polystyrene insulation boards, minimum density $30 \text{ kg}\cdot\text{m}^{-3}$, may be laid over the membrane.

17.2 Suitable tongue-and-groove flooring boards should be selected in accordance with BS EN 12871 : 2013, and loose-laid over the membrane to within 10 mm of the walls. The boards are laid staggered and the joints sealed with a thermoplastic wood adhesive to BS EN 204 : 2016.

17.3 Alternatively, the membrane is covered by concrete or screed a minimum of 65 mm thick in accordance with BS 8204-1 : 2003. Care should be taken to ensure the membrane is not displaced when placing the concrete or screed.

17.4 Proprietary screeds may also be considered, which can generally be laid at thicknesses less than 65 mm, but the use of these products with the membrane has not been assessed by the BBA and is outside the scope of this Certificate.

Technical Investigations

18 Tests

18.1 Tests were carried out and the results assessed to determine the resistance to water penetration of the membrane joints.

18.2 A comparative assessment was made between Newton 508 Eco Floor and previously assessed Newton membranes 508, 508R, 520 and 520 Eco.

19 Investigations

19.1 An assessment was made of the scope of use and durability of the system in relation to the generic properties of the membrane.

19.2 The manufacturing process was evaluated, including the methods adopted for quality control, and details were obtained of the quality and composition of the materials used.

Bibliography

BS 5250 : 2011 + A1 : 2016 *Code of practice for control of condensation in buildings*

BS 6576 : 2005 + A1 : 2012 *Code of practice for diagnosis of rising damp in walls of buildings and installation of chemical dampproof courses*

BS 8102 : 2009 *Code of practice for protection of below ground structures against water from the ground*

BS 8204-1 : 2003 + A1 : 2009 *Screeds, bases and in-situ floorings — Concrete bases and cement sand levelling screeds to receive floorings — Code of practice*

BS EN 204 : 2016 *Classification of thermoplastic wood adhesives for non-structural applications*

BS EN 1991-1-1 : 2002 *Eurocode 1. Actions on structures. General actions. Densities, self-weight, imposed loads for buildings*

NA to BS EN 1991-1-1 : 2002 *UK National Annex to Eurocode 1 : Actions on structures — General actions — Densities, self-weight, imposed loads for buildings*

BS EN 1992-3 : 2006 *Eurocode 2 : Design of concrete structures — Liquid retaining and containing structures*

NA to BS EN 1992-3 : 2006 *UK National Annex to Eurocode 2. Design of concrete structures. Liquid retaining and containment structures*

BS EN 12871 : 2013 *Wood-based panels — Performance specifications and requirements for load bearing boards for use in floors, walls and roofs*

BS EN 13501-1 : 2018 *Fire classification of construction products and building elements — Classification using data from reaction to fire tests*

BS EN 13967 : 2012 *Flexible sheets for waterproofing — Plastic and rubber damp proof sheets including plastic and rubber basement tanking sheet — Definitions and characteristics*

BS EN ISO 9001 : 2015 *Quality management systems — Requirements*

Property Care Association COP02 *Code of Practice for Installation of Remedial Damp-proof Courses in Masonry Walls*

Conditions of Certificate

Conditions

1. This Certificate:

- relates only to the product that is named and described on the front page
- is issued only to the company, firm, organisation or person named on the front page – no other company, firm, organisation or person may hold or claim that this Certificate has been issued to them
- is valid only within the UK
- has to be read, considered and used as a whole document – it may be misleading and will be incomplete to be selective
- is copyright of the BBA
- is subject to English Law.

2. Publications, documents, specifications, legislation, regulations, standards and the like referenced in this Certificate are those that were current and/or deemed relevant by the BBA at the date of issue or reissue of this Certificate.

3 This Certificate will be displayed on the BBA website, and the Certificate Holder is entitled to use the Certificate and Certificate logo, provided that the product and its manufacture and/or fabrication, including all related and relevant parts and processes thereof:

- are maintained at or above the levels which have been assessed and found to be satisfactory by the BBA
- continue to be checked as and when deemed appropriate by the BBA under arrangements that it will determine
- are reviewed by the BBA as and when it considers appropriate.

4. The BBA has used due skill, care and diligence in preparing this Certificate, but no warranty is provided.

5. In issuing this Certificate the BBA is not responsible and is excluded from any liability to any company, firm, organisation or person, for any matters arising directly or indirectly from:

- the presence or absence of any patent, intellectual property or similar rights subsisting in the product or any other product
- the right of the Certificate holder to manufacture, supply, install, maintain or market the product
- actual installations of the product, including their nature, design, methods, performance, workmanship and maintenance
- any works and constructions in which the product is installed, including their nature, design, methods, performance, workmanship and maintenance
- any loss or damage, including personal injury, howsoever caused by the product, including its manufacture, supply, installation, use, maintenance and removal
- any claims by the manufacturer relating to UKCA, UKNI or CE marking.

6. Any information relating to the manufacture, supply, installation, use, maintenance and removal of this product which is contained or referred to in this Certificate is the minimum required to be met when the product is manufactured, supplied, installed, used, maintained and removed. It does not purport in any way to restate the requirements of the Health and Safety at Work etc. Act 1974, or of any other statutory, common law or other duty which may exist at the date of issue or reissue of this Certificate; nor is conformity with such information to be taken as satisfying the requirements of the 1974 Act or of any statutory, common law or other duty of care.

British Board of Agrément

1st Floor, Building 3, Hatters Lane
Croxley Park, Watford
Herts WD18 8YG

©2024

tel: 01923 665300
clientservices@bbacerts.co.uk
www.bbacerts.co.uk